

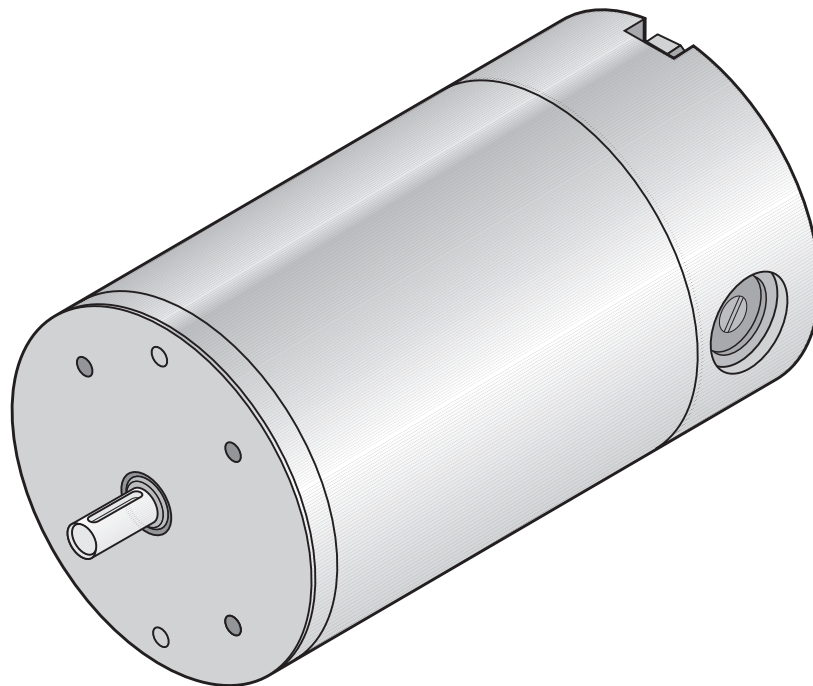
## DC PM Motor 48V 3000RPM 220W / 520W

65189-545

### DESIGN FEATURES

- Replaceable brushes
- Reversible rotation
- Zinc plated corrosion protected housing
- Aluminium/Zinc endshields with ball bearings
- Class F insulation (Max ambient 40°C)
- UL recognised component (E303615)
- Enclosure: IP 54\*
- Cooling: IC 410 (TENV)
- Designed to BS 5000-11  
BS EN 60034  
IEC 60072

\* IP rating only applies once B14 is mounted to component



### PERFORMANCE DATA

#### Continuous Rating (S1 Duty Cycle)

Torque (Nm)	0.70
Speed (RPM)	3000
Power (W)	220
Current (A)	6.2

#### Short-time Rating (S2 Duty Cycle 10min)

Torque (Nm)	1.90
Speed (RPM)	2600
Power (W)	520
Current (A)	15.4

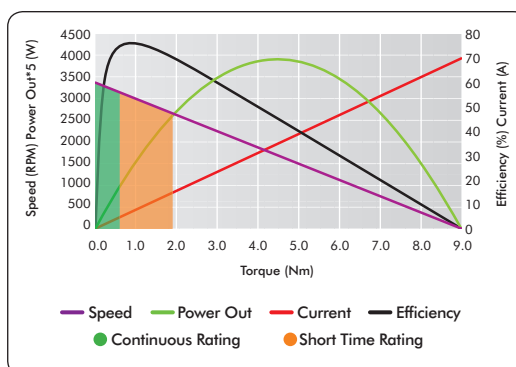
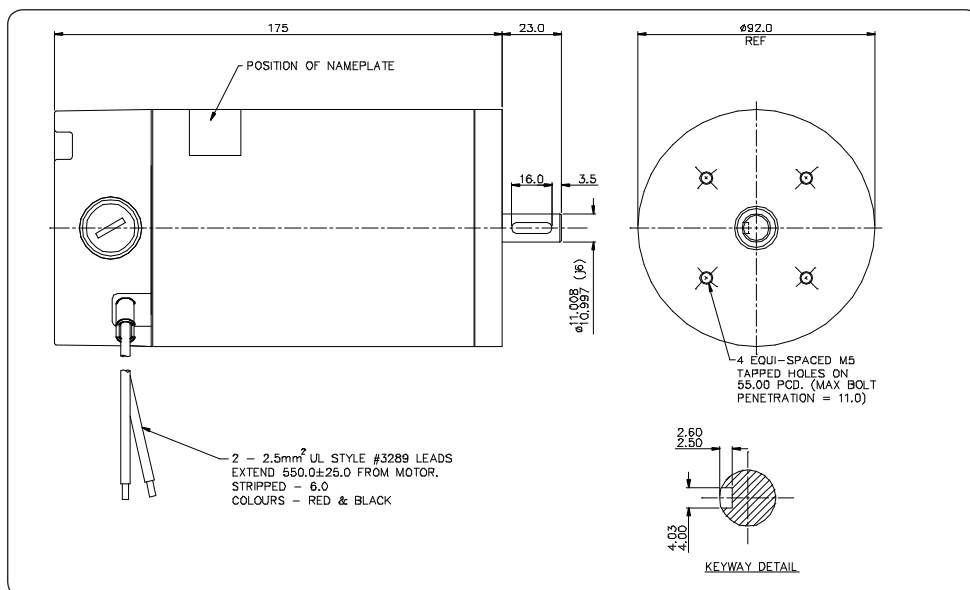
#### No Load

Speed (RPM)	3300 (+/- 5%)
-------------	---------------

#### Stall

Torque (Nm)	8.99
Current (A)	70.0

Max Efficiency	76%
Weight	4.3Kg



### AVAILABLE OPTIONS

- Mounting and connection  
(Range of standard IEC flanges and bases available)
- Terminal box
- Electromechanical brake (1.5Nm)
- Rear output shaft
- Painted finish
- RFI suppression

[www.lemac.com](http://www.lemac.com)

**LOTHIAN ELECTRIC MACHINES LIMITED**  
HOSPITAL ROAD · HADDINGTON · EAST LoTHIAN · EH41 3PD  
TEL: 01620 828700 FAX: 01620 828730  
[info@lemac.com](mailto:info@lemac.com)