

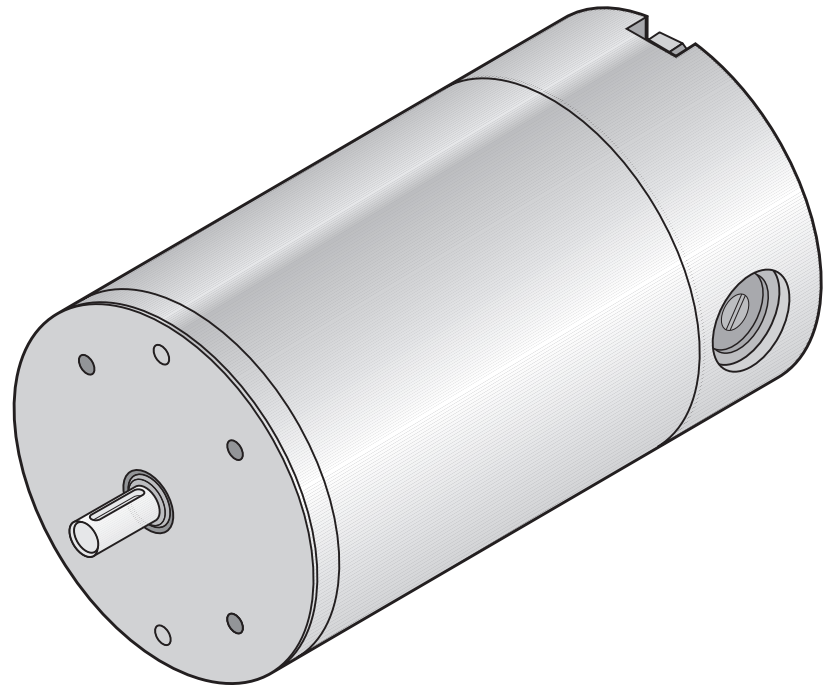
DC PM Motor 24V 1500RPM 90W / 230W

65189-522

DESIGN FEATURES

- Replaceable brushes
- Reversible rotation
- Zinc plated corrosion protected housing
- Aluminium/Zinc endshields with ball bearings
- Class F insulation (Max ambient 40°C)
- UL recognised component (E303615)
- Enclosure: IP 54*
- Cooling: IC 410 (TENV)
- Designed to BS 5000-11
BS EN 60034
IEC 60072

* IP rating only applies once B14 is mounted to component



PERFORMANCE DATA

Continuous Rating (S1 Duty Cycle)

| | |
|-------------|------|
| Torque (Nm) | 1.15 |
| Speed (RPM) | 1500 |
| Power (W) | 180 |
| Current (A) | 10.5 |

Short-time Rating (S2 Duty Cycle 10min)

| | |
|-------------|------|
| Torque (Nm) | 2.40 |
| Speed (RPM) | 1100 |
| Power (W) | 280 |
| Current (A) | 21.0 |

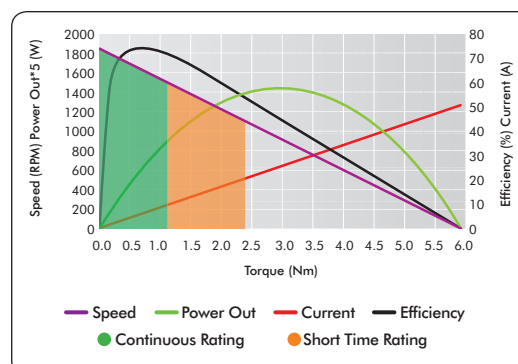
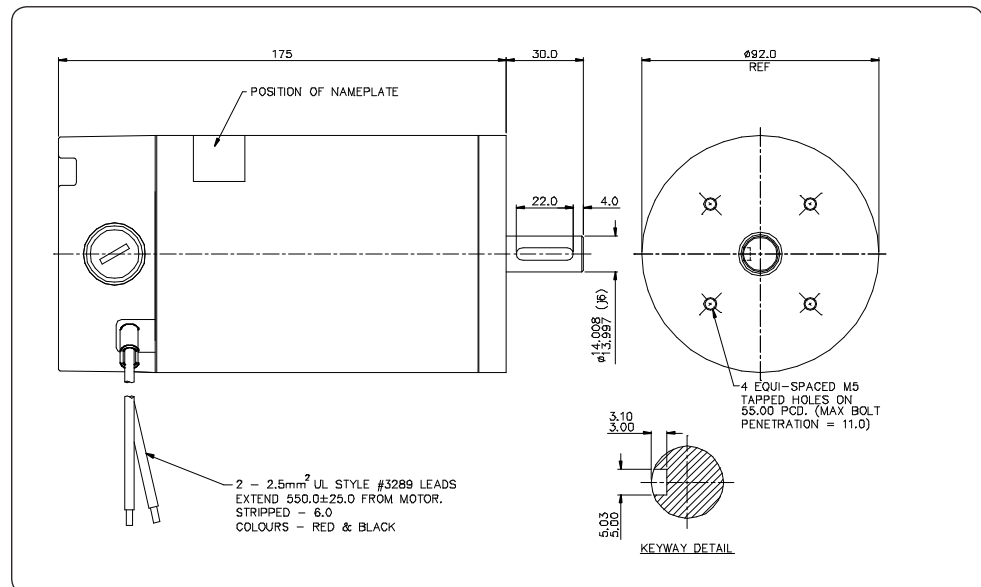
No Load

| | |
|-------------|---------------|
| Speed (RPM) | 1850 (+/- 5%) |
|-------------|---------------|

Stall

| | |
|-------------|------|
| Torque (Nm) | 5.94 |
| Current (A) | 50.8 |

| | |
|----------------|-------|
| Max Efficiency | 74% |
| Weight | 4.3Kg |



AVAILABLE OPTIONS

- Mounting and connection (Range of standard IEC flanges and bases available)
- Terminal box
- Electromechanical brake (1.5Nm)
- Rear output shaft
- Painted finish
- RFI suppression

www.lemac.com

LOTHIAN ELECTRIC MACHINES LIMITED
HOSPITAL ROAD · HADDINGTON · EAST LOTHIAN · EH41 3PD
TEL: 01620 828700 FAX: 01620 828730
info@lemac.com