

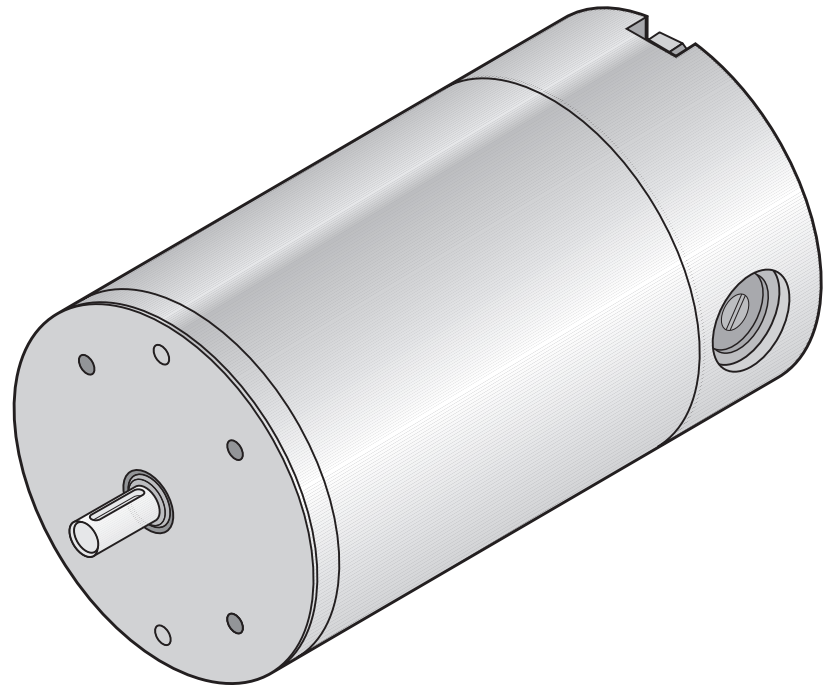
DC PM Motor 12V 1500RPM 95W / 175W

65189-511

DESIGN FEATURES

- Replaceable brushes
- Reversible rotation
- Zinc plated corrosion protected housing
- Aluminium/Zinc endshields with ball bearings
- Class F insulation (Max ambient 40°C)
- UL recognised component (E303615)
- Enclosure: IP 54*
- Cooling: IC 410 (TENV)
- Designed to BS 5000-11
BS EN 60034
IEC 60072

* IP rating only applies once B14 is mounted to component



PERFORMANCE DATA

Continuous Rating (S1 Duty Cycle)

Torque (Nm)	0.60
Speed (RPM)	1500
Power (W)	95
Current (A)	12.0

Short-time Rating (S2 Duty Cycle 10min)

Torque (Nm)	1.50
Speed (RPM)	1100
Power (W)	175
Current (A)	27.7

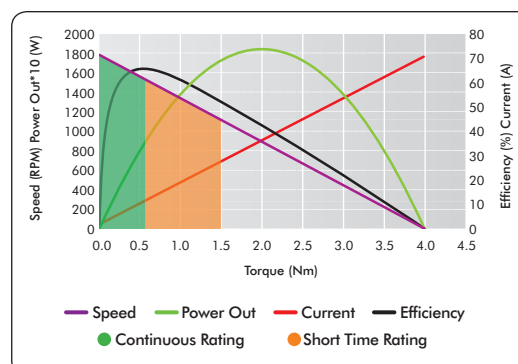
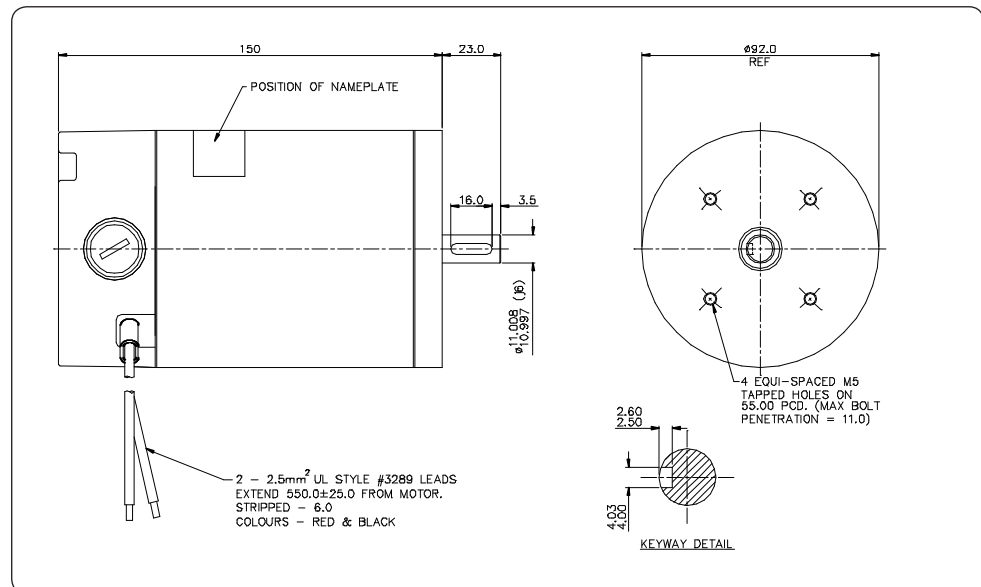
No Load

Speed (RPM)	1800 (+/- 5%)
-------------	---------------

Stall

Torque (Nm)	3.98
Current (A)	70.5

Max Efficiency	66%
Weight	3.5Kg



AVAILABLE OPTIONS

- Mounting and connection (Range of standard IEC flanges and bases available)
- Terminal box
- Electromechanical brake (1.5Nm)
- Rear output shaft
- Painted finish
- RFI suppression

www.lemac.com

LOTHIAN ELECTRIC MACHINES LIMITED
HOSPITAL ROAD · HADDINGTON · EAST LoTHIAN · EH41 3PD
TEL: 01620 828700 FAX: 01620 828730
info@lemac.com